

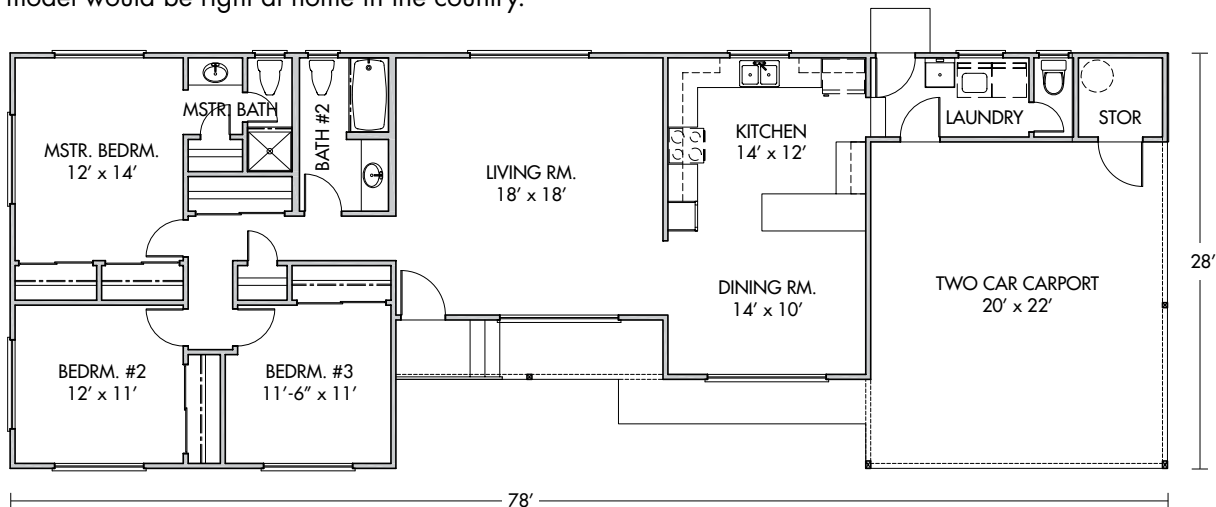
3 BEDROOM / 2 ½ BATH



Ilihia

Ilihia means “to be awe-struck by a thing of beauty.” What a great name for a great house. This ranch style home not only looks good, but provides a full array of practical living and storage spaces. At its heart is a large living room that makes for great indoor entertaining. This model would be right at home in the country.

1444 SQ. FT. LIVING AREA
1992 SQ. FT. TOTAL
3 BEDROOM / 2½ BATH
2 CAR CARPORT



Invest in Energy Savings Now, and Save Later

All of HPM's packaged homes now come with Solar Hot Water systems to conform with building requirements, to save on your electric bill, and to be better for the environment.

But solar hot water is just the first step to energy efficiency in your home. The biggest opportunity to create not just energy efficiency—but actual energy independence, is to install a Solar Photovoltaic (PV) system. As a new home builder using HPM's Custom Metal Roofing, you are in a unique position to take advantage of one of the most attractive and effective Solar PV systems available.

Hawaii Solar Roofing, a partner of HPM, provides an engineered system using a solar laminate applied to the valleys of HPM's 16-inch standing seam Custom Metal Roofing. This ultra-efficient solar PV laminate collects the energy of the sun and allows you to power your house and potentially even dial-back your electric meter. The Solar PV laminate has a 20-year warranty, and unlike traditional solar panels, does not require fastener holes in your new roof.

To take best advantage of the energy saving technologies available to new home builders, ask your HPM Home Design Consultant for more information.

HAWAII SOLAR ROOFING