

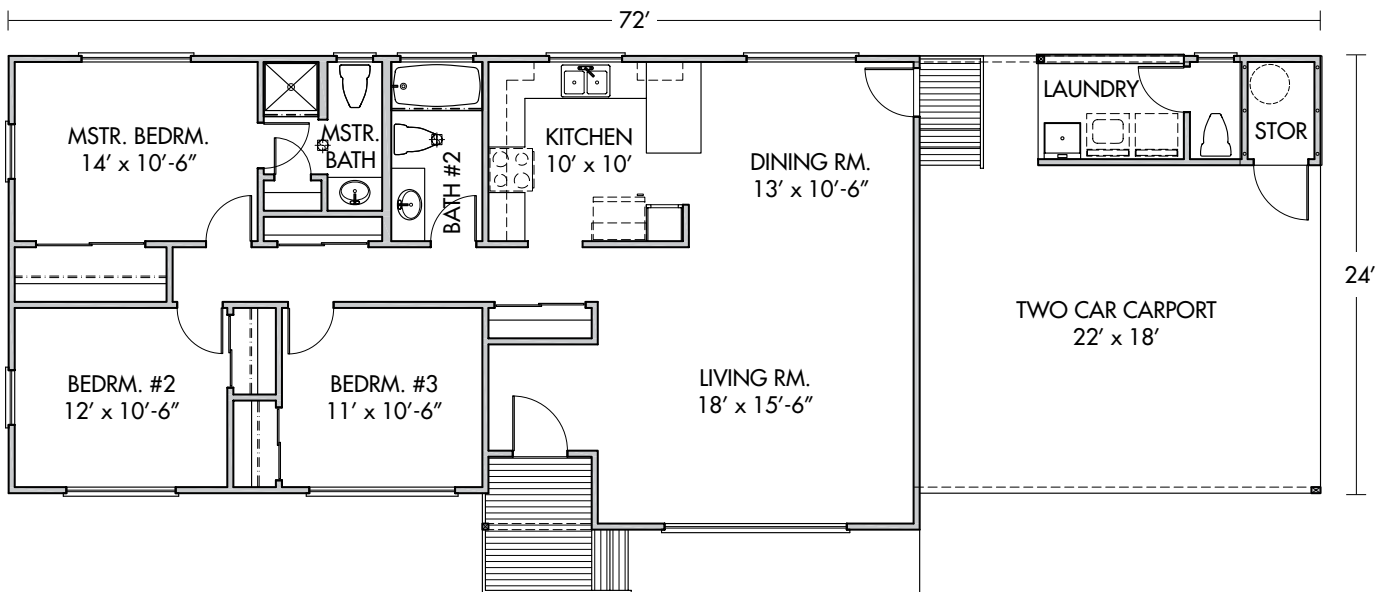
## 3 BEDROOM / 2 ½ BATH



# Ke'alahi

This design sparkles in its simplicity. Three bedrooms, two and a half baths in a very straight-forward layout make this a popular selection. The living areas are good-sized and comfortable, plus there's a lot of storage space in this home. If you're looking for a house that really works, this may be the one for you.

1245 SQ. FT. LIVING AREA  
1797 SQ. FT. TOTAL  
3 BEDROOM / 2½ BATH  
2 CAR CARPORT



### Wall Panels Make Quick Framing

How fast will it take you to frame your house? Depending on its size, how many people are working on it and how experienced those people are, it could take a few days to several weeks or more. What would you say if you could stand all the walls up in one day? Think of the time and money saved!

HPM manufactures Wall Panels in our Kea'au plant. Because our Wall Panels are built in a manufacturing environment, there is less material wasted and quality is tightly controlled. Wall panels can even include exterior sheathing and strapping. The panels are then delivered to your lot ready to be put in place with the direction of just one experienced framer and some muscle or machinery.

Ask your HPM Home Design Consultant about Wall Panels for your home.