

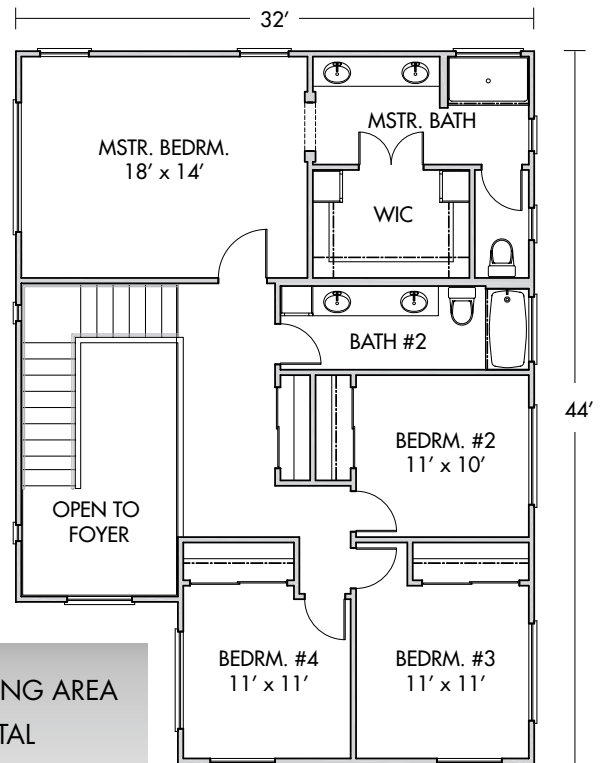
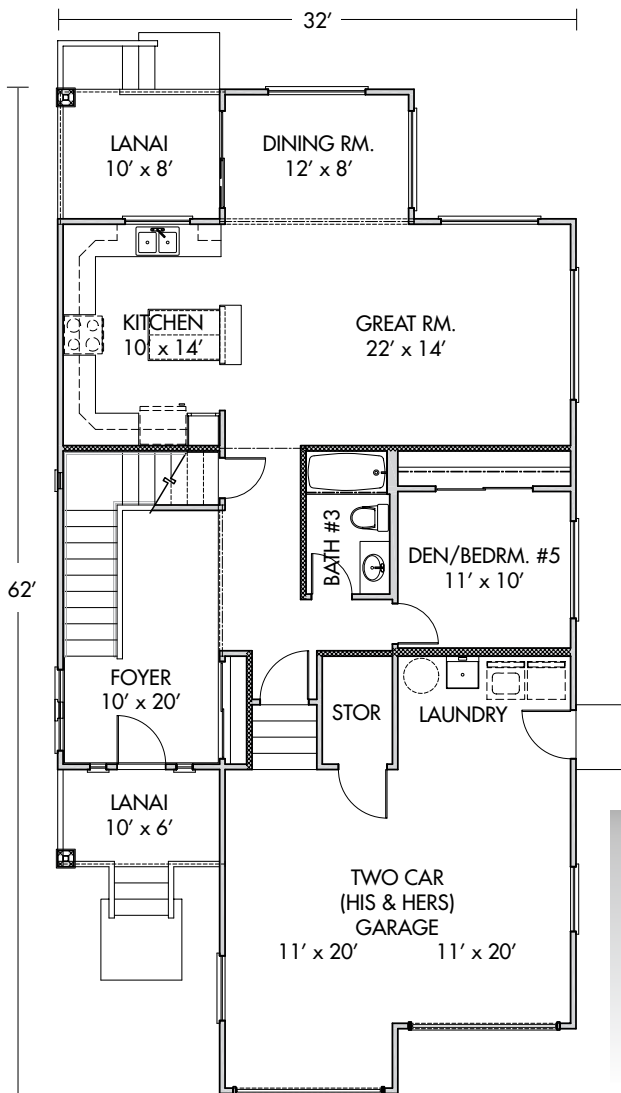
5 BEDROOM / 3 BATH

NEW MODEL!



Po'okela

Our two-story Po'okela, with its 5 bedrooms, 3 bathrooms and more than 3000 square feet, is perfect for a large or extended family. Po'okela can mean "foremost, best, superior," and its open living/dining/kitchen space, two lanai, and "his & her" two-car garage make it an outstanding choice for a growing family.



2364 SQ. FT. LIVING AREA
3028 SQ. FT. TOTAL
5 BEDROOM / 3 BATH
2 CAR GARAGE
2 COVERED LANAI