

Pre-approved

HPM

HOMES



THE FAST-TRACK WAY TO BUILD

County of Hawaii Building Division approved home plans to help Hawaii Island residents save time and build a home that fits, faster and more economically.

Available for Hawaii Island only.

**To qualify for the time and cost savings, all pre-approved models must be built as shown without modification. Availability may vary based on site location and/or conditions.*



Schedule an appointment with a
Home Planning Consultant to get started:

HILO, HAWAII
380 Kanoelehua Avenue
(808) 319-2249

KONA, HAWAII
74-5511 Luhia Street
(808) 334-4241

WAIMEA, HAWAII
64-1027 Mamalahoa Highway
(808) 334-4241

For more info and to see what's included in our home package, visit our website:

HPMHAWAII.COM/HOMES

1 Bedroom



Pilikai



528 SQ. FT. Living Area



685 SQ. FT. Total



1 Bedroom



1 Bath



Covered Lanai

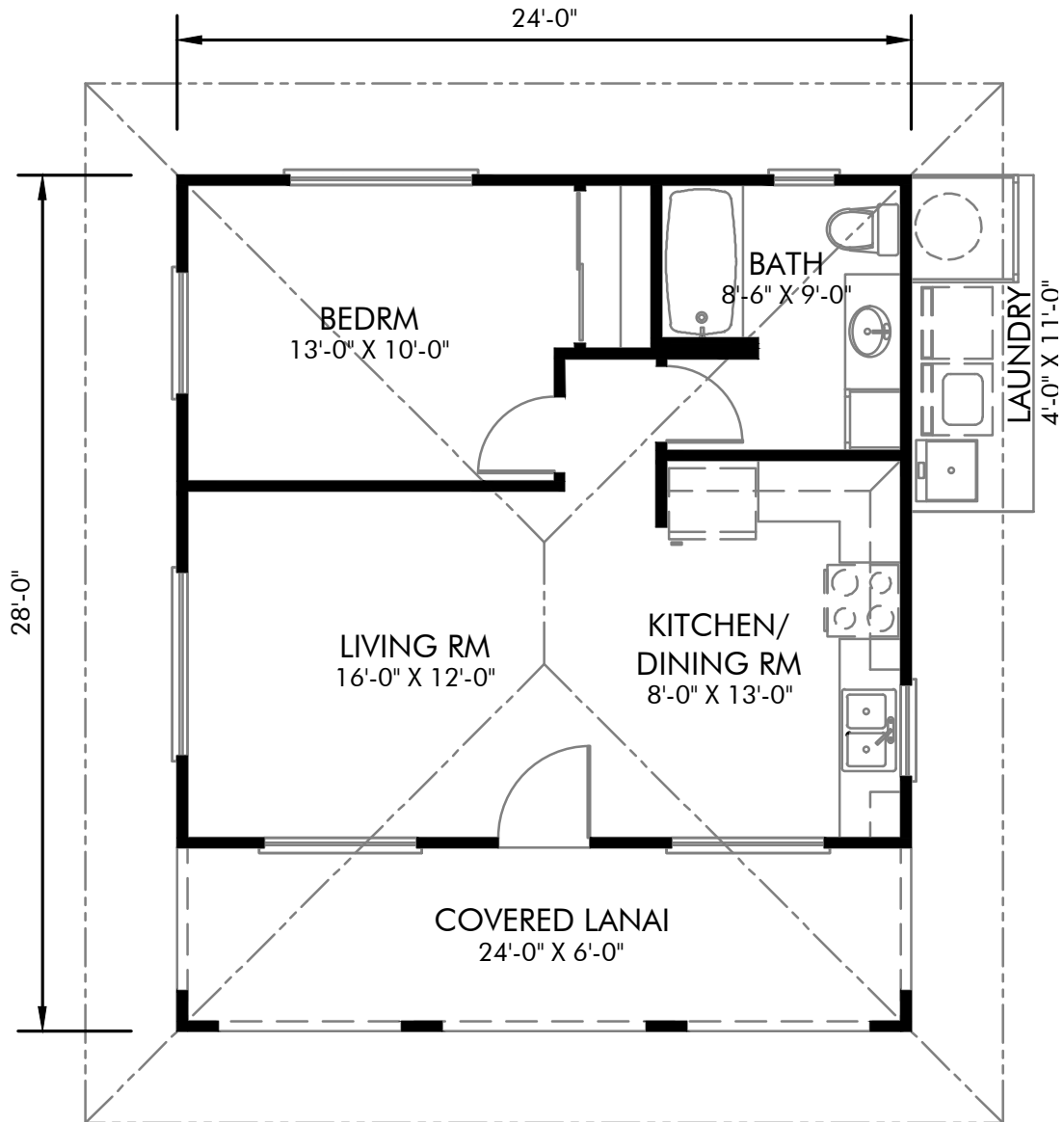
Design Features

Scan to learn more about the Pilikai design features



SEE BACK FOR FLOOR PLANS

Floor Plan



Design Features

Scan to learn more about the Pilikai design features



2 Bedroom



'Olu'Olu



700 SQ. FT. Living Area



940 SQ. FT. Total



2 Bedroom



1 Bath



Attached Carport

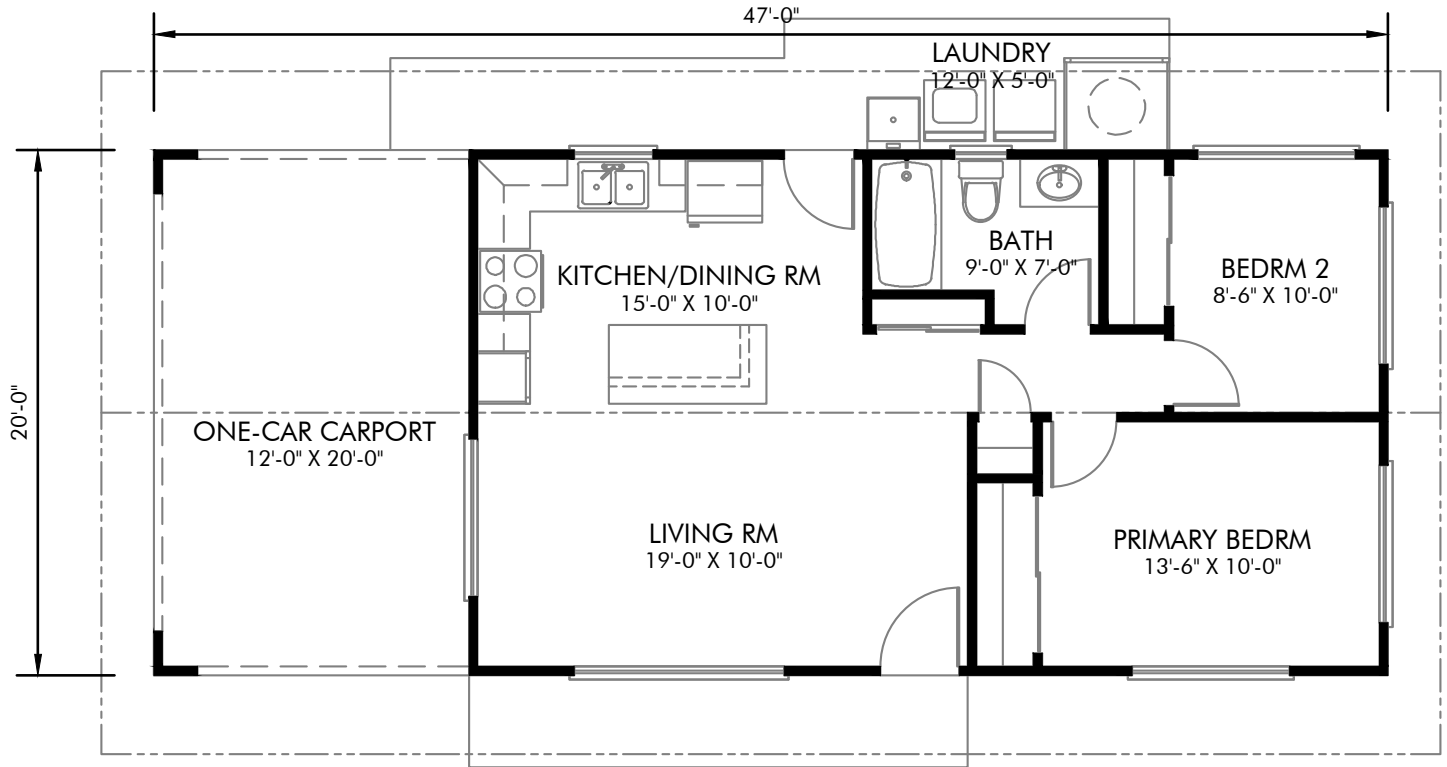
Design Features

Scan to learn more about the 'Olu'Olu design features



SEE BACK FOR FLOOR PLANS

Floor Plan



Design Features

Scan to learn more about the 'Olu'Olu design features



2 Bedroom



'Auli'i



864 SQ. FT. Living Area



1392 SQ. FT. Total



2 Bedroom



2 Bath



Attached Carport

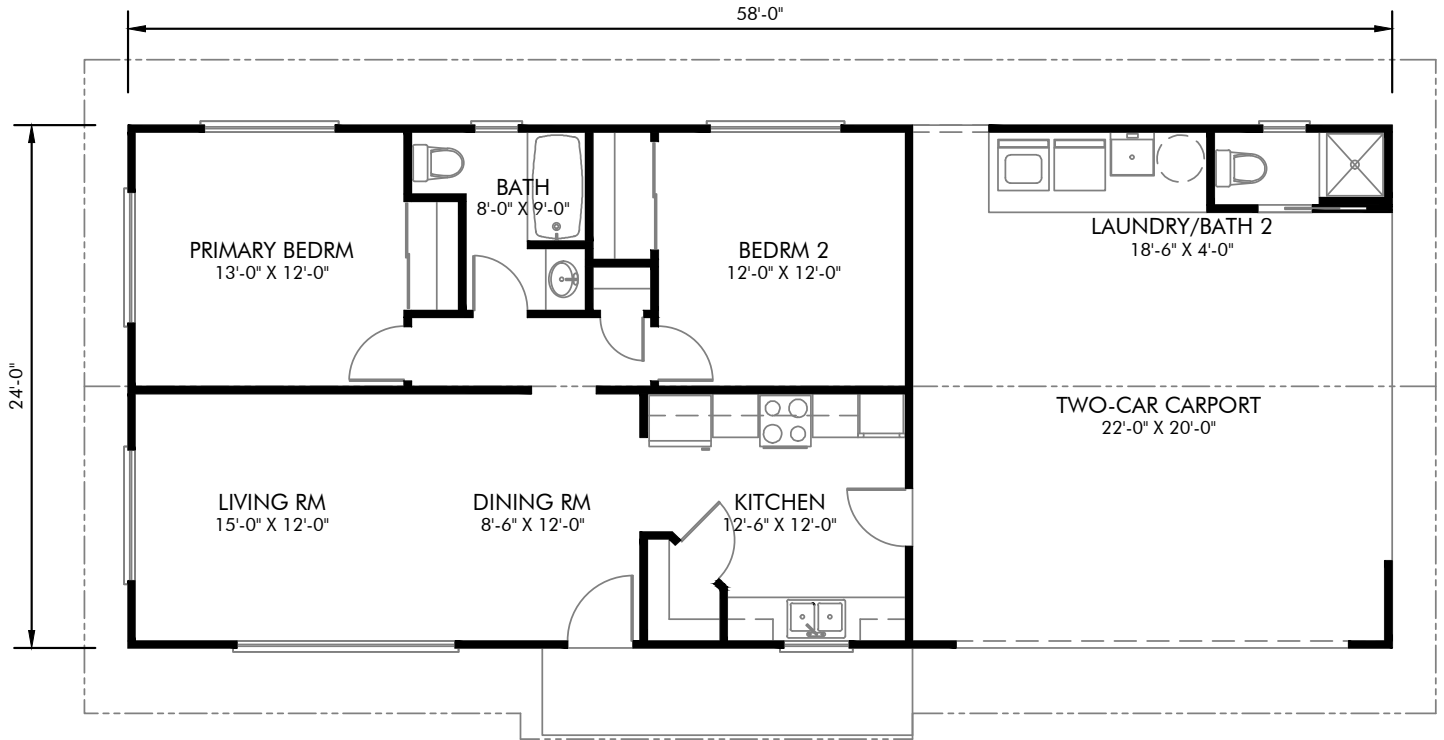
Design Features

Scan to learn more about the 'Auli'i' design features



SEE BACK FOR FLOOR PLANS

Floor Plan



Design Features

Scan to learn more about the 'Auli'i design features



3 Bedroom



Huaka



1104 SQ. FT. Living Area



1632 SQ. FT. Total



3 Bedroom



2 Bath



Attached Carport

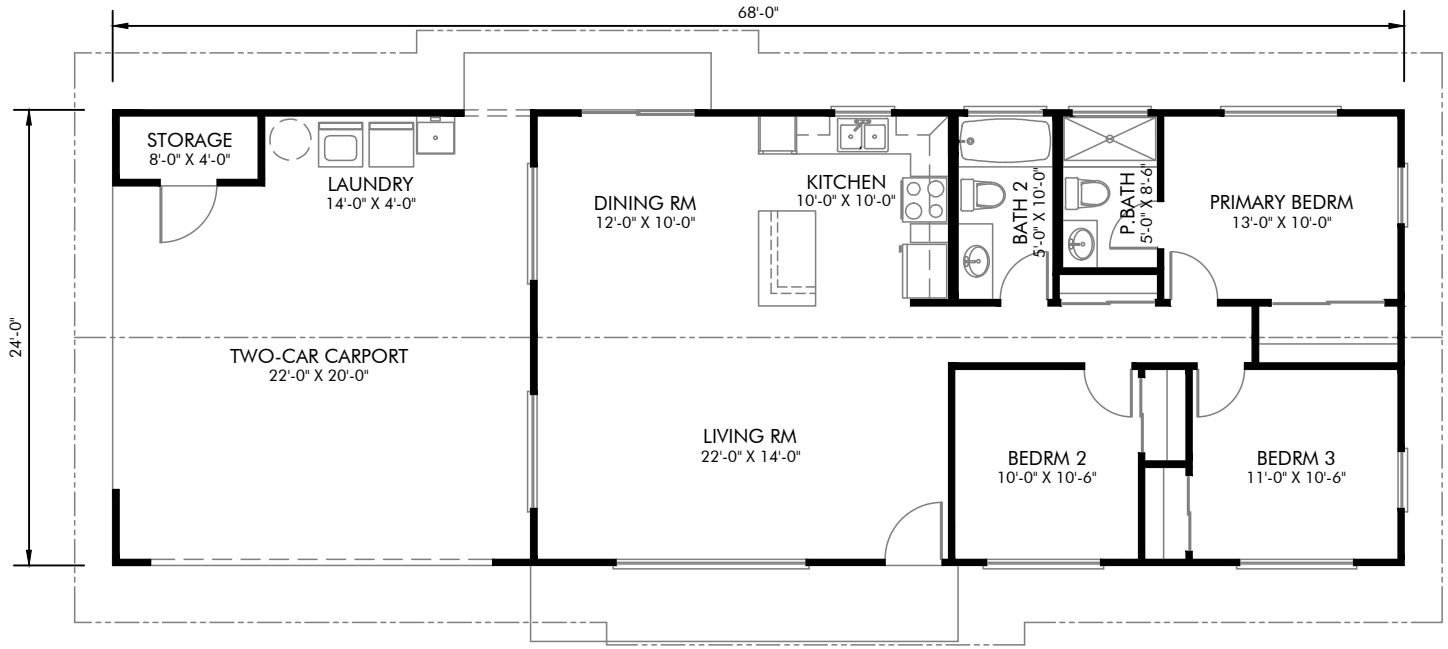
Design Features

Scan to learn more about the Huaka design features



SEE BACK FOR FLOOR PLANS

Floor Plan



Design Features

Scan to learn more about the Huaka design features



3 Bedroom



Pua Melia



1246 SQ. FT. Living Area



1716 SQ. FT. Total



3 Bedroom



3 Bath



Attached Carport



Vaulted Ceiling

Design Features

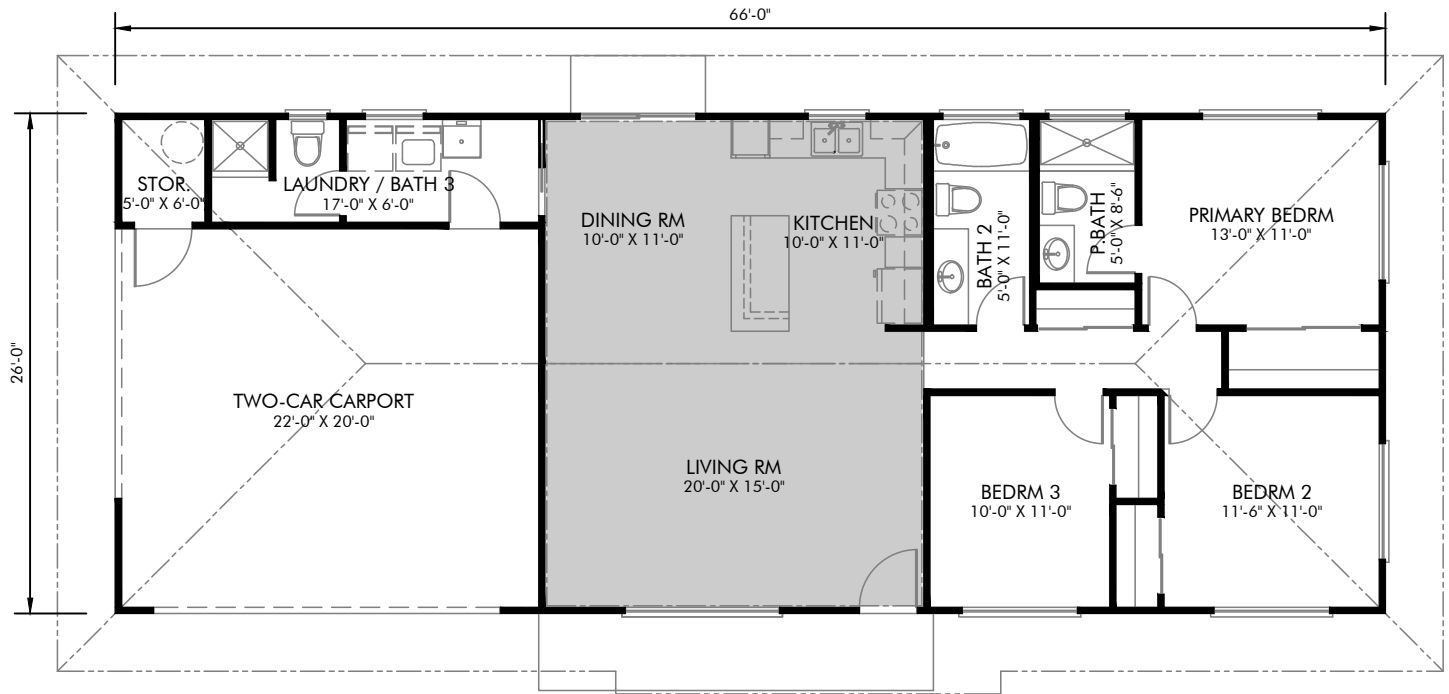
Scan to learn more about the Pua Melia design features



SEE BACK FOR FLOOR PLANS

Floor Plan

Pua Melia



Design Features

Scan to learn more about the Pua Melia design features



3 Bedroom



Maluhia



2036 SQ. FT. Living Area



2908 SQ. FT. Total



3 Bedroom



3 Bath



Covered Lanai



Vaulted Ceiling



Attached Garage

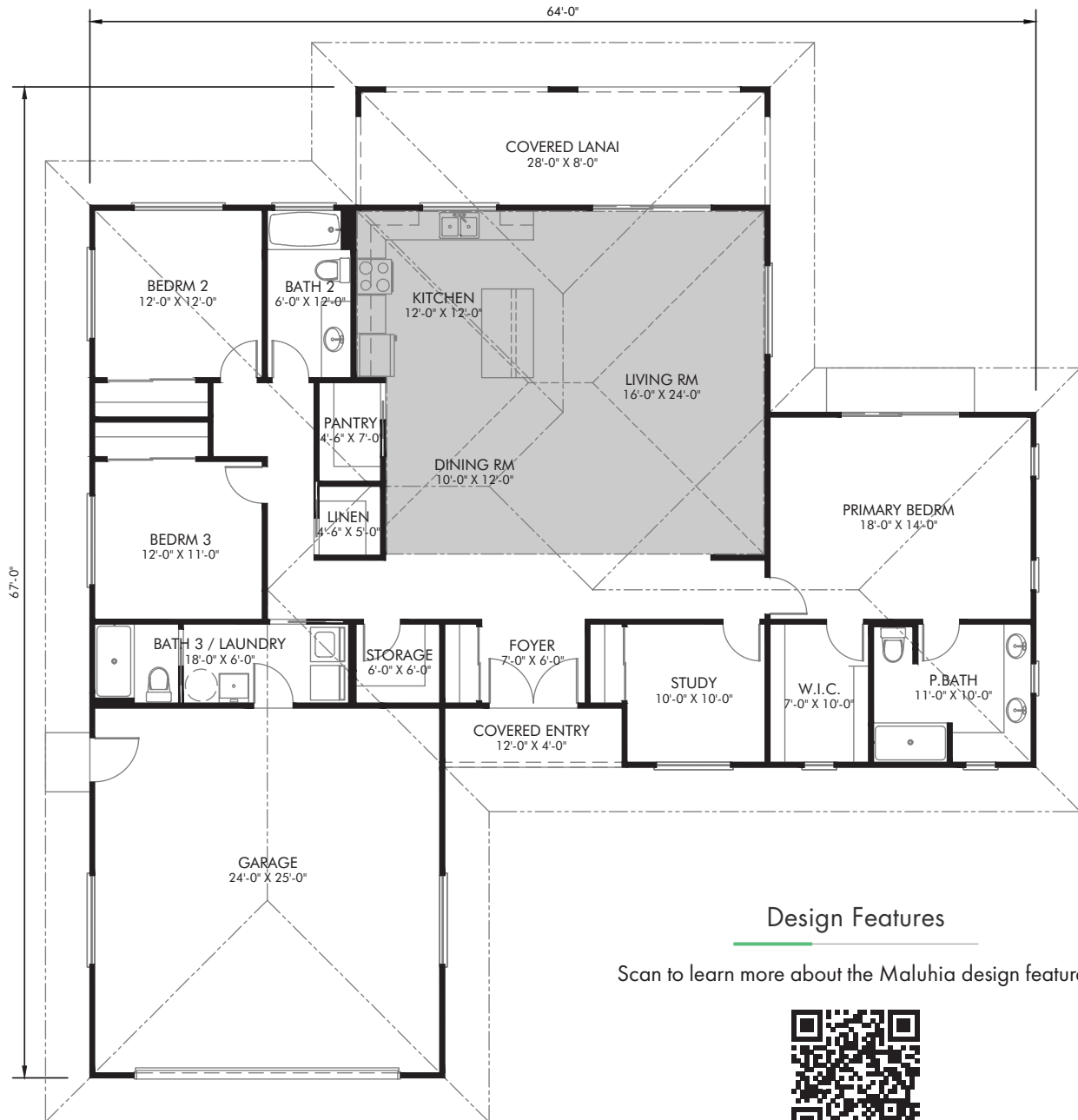
Design Features

Scan to learn more about the Maluhia design features



SEE BACK FOR FLOOR PLANS

Floor Plan



Design Features

Scan to learn more about the Maluhia design features



3 Bedroom



Pua Melia Deluxe



1286 SQ. FT. Living Area



1728 SQ. FT. Total



4 Bedroom



2.5 Bath



Attached Carport

Design Features

Scan to learn more about the Pua Melia Deluxe design features



SEE BACK FOR FLOOR PLANS

3 Bedroom



Pua Melia Deluxe



1286 SQ. FT. Living Area



1728 SQ. FT. Total



4 Bedroom



2.5 Bath



Attached Carport

Design Features

Scan to learn more about the Pua Melia Deluxe design features



SEE BACK FOR FLOOR PLANS