






3 Bedroom



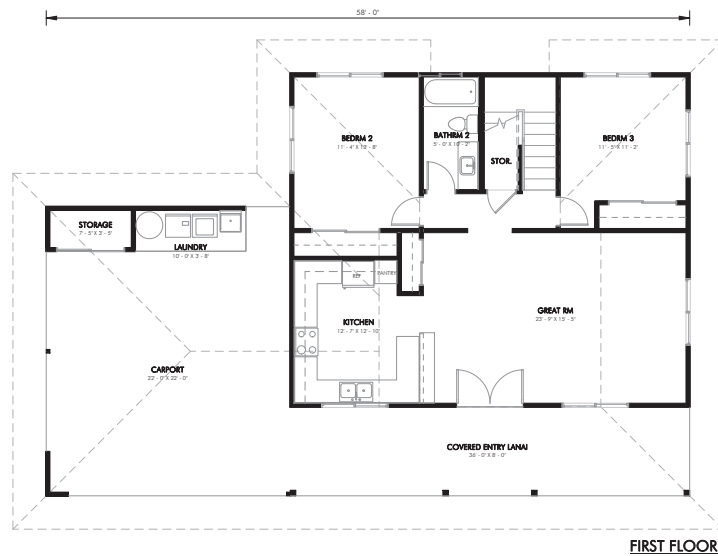
Pa'ia

-  1616 SQ. FT. Living Area
-  2436 SQ. FT. Total
-  3 Bedroom
-  2 Bath
-  Covered Lanai
-  Attached Carport

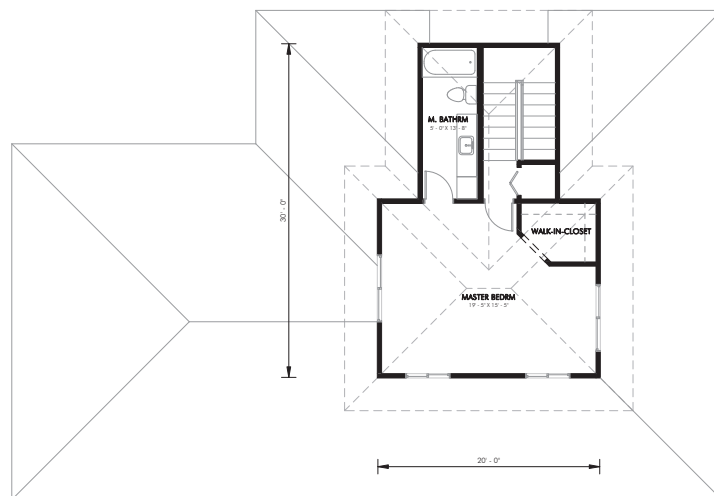
Description

The three-bedroom, two-bath Pa'ia home is a two-story design featuring an open floor plan, a generous kitchen, a private master suite upstairs and inviting covered lanai entry.

Floor Plan



FIRST FLOOR



SECOND FLOOR

Design Features

- Covered front entry with generous covered lanai for relaxing or entertaining
- Open floor plan kitchen, dining and living room for flexible living and lots of natural light
- Weather-protected laundry area so you can be comfortable even when doing house chores
- Generously sized bedrooms for flexible living, whether you need a home office, hobby room or a room to grow with your children
- Extra garage storage to keep your outdoor activities, supplies and hobby equipment organized